

Made by The Paper Birds in Partnership with Theatre Centre.
A Co-Production with New Wolsey Theatre

International Promoter Pack



Feel Me is made by The Paper Birds in Partnership with Theatre Centre. A Co-Production with New Wolsey Theatre.
Supported by Padepokan Seni Bagong Kussudiardja and The Point, Eastleigh. Funded by British Council International Collaboration & Arts Council England

About the Show

Feel Me

Who do you care about and why?

Feel Me is our latest, interactive theatre show. **Feel Me** asks, via your mobile phone, who and what you care about from the stories unfolding live on stage in front of you.

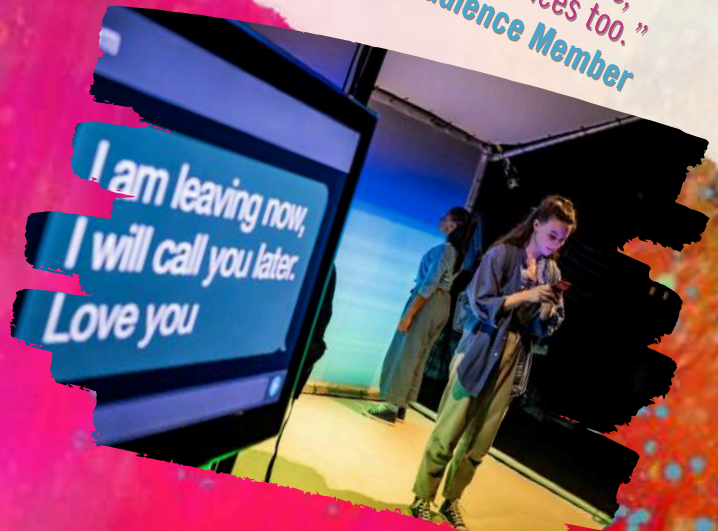
A stunning mixture of live performance, film, projection, dance and music, **Feel Me** explores the different lenses through which we are told, and connect to stories in the modern digital world.

Worlds unfold from backpacks, and tents are constructed and dismantled again, each scene and location temporary, like a transient teenager in search of safety, acceptance and a new place to call home.



"An astute untangling of adolescent angst...
humble, mature and quietly radical"
The Guardian

"Fabulous performers, interesting and unusual concept, well executed, perfect to appeal to young people, interesting for older audiences too."
Audience Member



An interrogation of empathy, **Feel Me** asks what makes us 'feel' for another person, as we journey through landscapes and across borders, through weather storms and paperwork, changing seasons, endless queues and interviews.

Feel Me seeks real world impact and action: as active participants within the show, audiences are gently and anonymously asked to share how they feel about the story they are witnessing at different moments, and to consider who they connect with, who they feel empathy for and why. This is measured using innovative software accessed by the audience during the show in a series of collaborative 'check-in' moments, with results creatively shared live as part of the performance.

Age guidance 13 years +. **Feel Me** is aimed firstly, but certainly not exclusively, at 13-25 year olds. The show has been made by a collective of exceptional young artists aged under 30, collaborating with The Paper Birds, thus providing stepping stones to our younger audiences.

Watch...

[Feel Me International Residency](#)

[Mini Documentary here](#)

[Feel Me Trailer here](#)

[Full Feel Me Show here](#)

"The Paper Birds are expert theatre-makers. They have their own trademarks, unearthing women's stories on hard-hitting themes through verbatim material and subtle movement."

Total Theatre

About The Paper Birds

The Paper Birds is a devising theatre company, with a social and political agenda. Established in 2003, we are recognised as UK leaders in devised verbatim theatre. We're artists, investigators, entrepreneurs, educators. We pride ourselves on taking complex, multi-faceted subjects and making them accessible. The artistic and participation branches of our activity have equal importance to our social purpose and identity.

We have a huge following amongst schools, colleges and universities nationally and internationally, delivering hundreds of workshops to tens of thousands of students every year. We are listed practitioners on a number of UK A Level exam boards and often studied for International Baccalaureate.

www.thepaperbirds.com/whoweare

"Never have I ever experienced something that has hit me to the core of my very being. I was completely captivated!"

Audience Member

Translation

Audiences are at the heart of everything we do and with Feel Me we have endeavoured to make the show as accessible as possible, with all performances featuring integrated captions. We will work with you in advance to translate the show into your local language. Much of the show is also non-verbal.

In a residency format, we can also work with a local Performer-Facilitator, to integrate them into the show as a cast member for moments of direct address with the audience.

Wrap Around

The Paper Birds deliver over 200 devising theatre workshops to schools per year across the UK, internationally and digitally. Our unique brand of workshops centre around sharing our devising process with young people, and empowering them to see devising theatre as a more accessible, enjoyable and collaborative process.

We can offer:

- Practical Workshops to allow students to explore the devising approaches and techniques behind Feel Me
- Education Resource Pack with interviews, workshop exercises, background information.
- Digital Workshops
- High quality Full Show Film
- Recording of Feel Me to watch again after the show
- Short Films about the making process, including interviews with the creative team
- Post Show Discussions.



Touring Models

Option 1

Show booking only. We prefer a minimum of 2 shows over 2 days.
5 - 6 people in the touring team.

Option 2

Longer residency including multiple workshops, a local performer integrated into the show, professional development training for local theatre professionals/teachers. We can also work with your team to offer a livestream of the show to your online audience to extend engagement.
8 - 10 people in the touring team.

Workshops can be made bespoke to your target audience and communities. Please get in touch to discuss your objectives.

Transportation

No freight is required. All technical/set/costume are brought the touring team on the flight.

Excess/additional luggage as follows:

- 4 to 5 suitcases/peli cases 65 kg total approx (depending on what can be sourced locally).
- Depending on the airline baggage allowance per passenger, this may not therefore incur any additional costs.

"A well-constructed, emotionally challenging piece, bringing attention to a modern day real life tragic situation"
Audience Member

"Emotional, poignant, thought-provoking"
Audience Member



Technical Needs

The Paper Birds Provide:

"an innovative show that puts audience empathy to the test"
The Guardian - Feel Me

Projection screens	The projection screens on box are Showtex RP Fusion (Flame retardancy standard: NFPA 701 / pass + EN 13773 (2003) / class 2). The roof of the box is Showtex Cyclo 200 100% Cotton (Flame retardancy standard: NFP-M1 / BS-2B / DIN-B1 / AS 1530.3 / AS 1530.2 / NFPA 701)
Colour lighting gels	We will be touring colour gels, but, if in supply at your venue, it may be simpler to use in house gel. These are: 2x L015 (warm straw) and 2x L181 (dark blue) or equivalent, all cut for a 1k fresnel.
1 x Laptop computer to operate	We are touring with a DMX controller (ETC Nomad and Gadget II) running from a Mac-mini to operate lights in the show, but should this be out of action for any reason we will need help programming the desk.



Technical Needs

The Paper Birds Provide:

"Theatre as dialogue, audience as participators, not just spectators"
Audience Member

2 x Projectors	Projectors are placed upstage and rear thrown onto scaffold box screens. The other projector sits on the floor.
Clamps for scaffolding	Or Host Programmer to provide alternative if necessary for their style/type of scaffolds.
Costumes, props, bags, shoes	Toured in multiple large check-in suitcases, depending on the weight allowance of the airline.

Host Programmer Provides:

'Black box' stage with full black backdrop and black dance floor	Playing Space required 9 metres (width) x 5.5metres (depth).
Vinyl flooring	We require white vinyl/a white dance floor inside the box/tent.
Tape to secure vinyl to floor	
Minimum of 2 Host Venue technical staff	<ul style="list-style-type: none">• We require 2 technicians to support the get-in and get-out at your venue.• We require 1 technician to support us during the show.• Technicians must be confident in rigging and focussing lighting, and have an understanding of the technical infrastructure of the space.• Ideally at least 1 would have a good level of spoken English and/or we would need you to provide a translator.

Technical Needs

Host Programmer Provides

"So engaging and immersive -
mesmerising at times."
Audience Member

16 x Scaffold poles to create box structure	<ul style="list-style-type: none"> • Ideally made from aluminium. • Scaffold box measures 3 metres (width) x 2 metres (depth) • Scaffold box height: 3m (downstage) x 2m (upstage) • 7 x 3m poles: 6 for the box, 1 for the small TV (if to be rigged on the scaffold as normal - other solutions are possible for mounting the TV depending on your space) • 7 x 2m poles: 4 for the box, 1 for projector, 2 for the booms. If your space has permanently rigged boom positions, then these last 2 aren't needed. The lengths for the projector and booms don't need to be exact. • 2 x 2.2m poles for the box. • Box structure design plans to be provided on request.
3 x TV screens, plus a means to mount them e.g. from the lighting rig and/or stands and/or additional scaffolding	<ul style="list-style-type: none"> • We place 3 x TV screens either side of the scaffold box set. Ideally 2 screens are on traditional TV mounting stands and 1 small TV on a scaffolding pole. • Measurements/specs for the 3 x TVs to be discussed depending on the size of your auditorium and rigging possibilities.
3 x Plastic chairs	They should be stackable and lightweight.
1 x Table	Must be lightweight and close to 1m x 1.8m.
Cat 5 Line	This is show critical. We require a direct Cat5 Line from Stage to Tech Box.
Excellent wi-fi	This is show critical. All audience members will be online at the same time interacting live with the show via their smartphones.
Profile Lanterns	5 x ETC Source Four Zoom 15/30 or equivalent (irises may be required based on dimensions of the space and lenses available).

Technical Needs Host Programmer Provides

"...an inspired use of mobile phone
tech which managed to keep the
story my focus and added to my
experience"
Audience Member

2 x Handheld microphones	Ideally wireless - 1 x Stage Right, plus 1 x Stage Left.
Fresnels Lanterns	12 x 1k with barn doors.
Birdies/ PAR 16	6 x with equipment to rig 4 on the scaffolding structure and 2 on the floor. We require cable run to stage for these Par 16 birdies rigged on scaffold box. This is 5 x 15a cable and 1 x grelco.
1 x Grelco	
3 x 13a power lines	All stage left.
5 x 15a	Or whatever your rig uses as power lines to stage. On dimmer control.
Side stage booms	
3.5mm Jack to PA	Stage left
1 x Hazer	
4 x Tank traps with stage weights	

More detailed technical information,
including lighting plan, scaffold box
design, detailed schedules, provided
on request.

Contact

Executive Producer

Charlotte Kalantari-Gregory
charlotte@thepaperbirds.com
+44(0)7950 151 024

